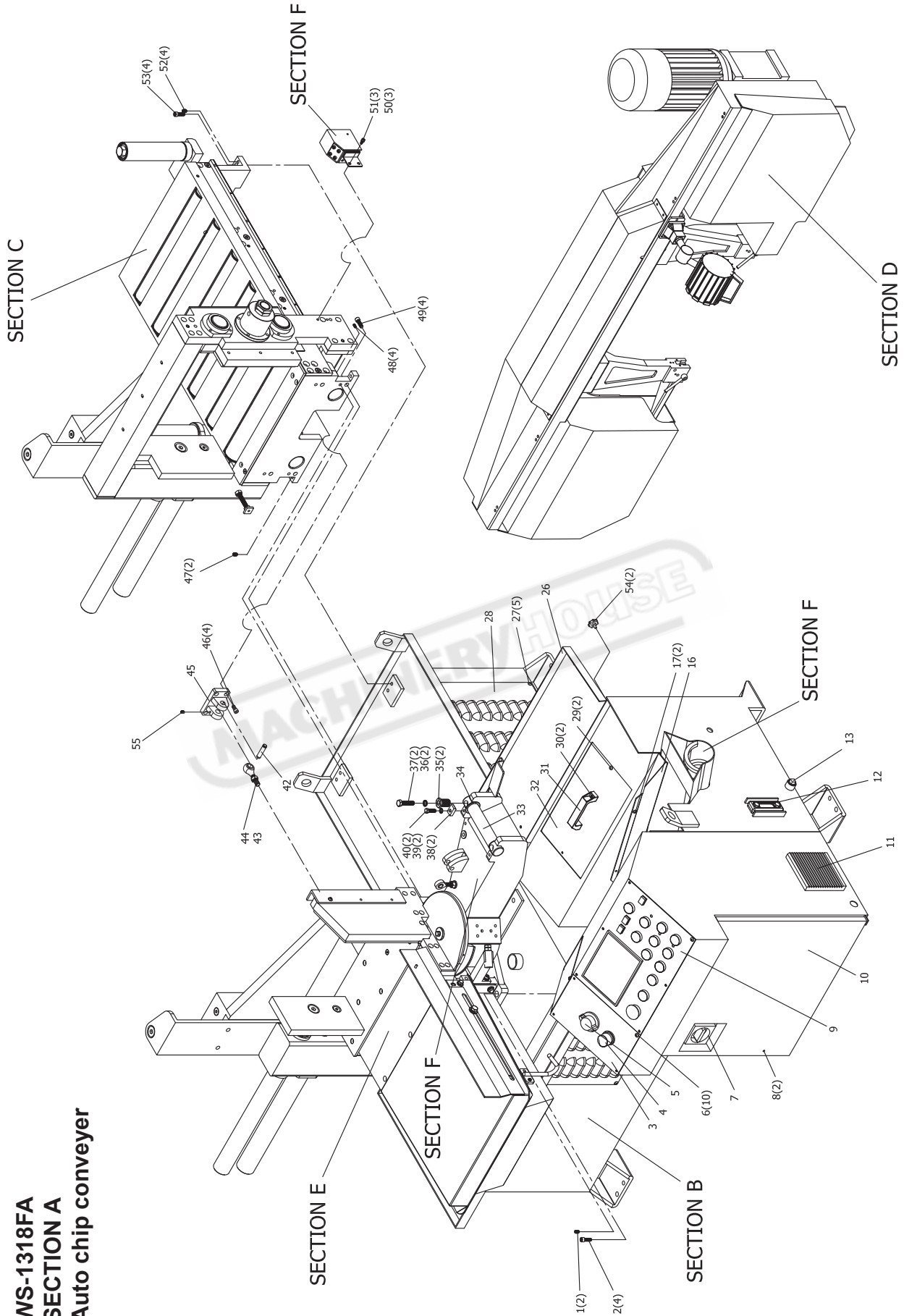


SECTION A (Auto chip conveyer) - PARTS LIST

Part No.	Description	Size No.	Q'ty	Part No.	Description	Size No.	Q'ty
A1	Set screw	1/2"x3/4"L	2				
A2	Hex. soc. cap screw	1/2"x1-1/4"L	4				
A3	Hydraulic control panel	NPB-001	1				
A4	Cutting rate knob	L25A2-01	1				
A5	Pressure regulator knob	L25A1-42	1				
A6	Round head screw	1/4"x1/2"L	10				
A7	Main power switch		1				
A8	Big round head screw	1/4"x1/2"L	2				
A9	Control panel	NPB-006	1				
A10	Control cabinet door	S138F3-01-H	1				
A11	Radiation device		1				
A12	Oil level gauge	9160418	1				
A13	Drain screw	PT 3/4"	1				
A16	Side plate	S138F3-03-A	1				
A17	Round head screw	3/16"x1/2"L	2				
A26	Coolant tray (Rear)	S138F3-24	1				
A27	Round head screw	3/16"x1/2"L	5				
A28	Hydraulic unit cover	S138F3-01-B	1				
A29	Round head screw	3/16"x1/2"L	2				
A30	Round head screw	1/4"x1/2"L	2				
A31	Plastic handle	9160502	1				
A32	Coolant cover	S138F3-01-E	1				
A33	Saw head shaft	S13802-01	1				
A34	Washer	S13802-01-1	1				
A35	Adjusting screw	S13802-23	2				
A36	Spring washer	1/2"	2				
A37	Steel hex. cap bolt	1/2"x2-1/2"L	2				
A38	Press plate	S13802-27	2				
A39	Spring washer	3/8"	2				
A40	Steel hex. cap bolt	3/8"x3/4"L	2				
A42	Support shaft	S138F2-18	1				
A43	Nut	M16	1				
A44	Fish eye bearing	POS16	1				
A45	Cylinder support device	S138F1-03	1				
A46	Hex. soc. cap screw	3/8"x1"L	4				
A47	Set screw	3/8"x3/4"L	2				
A48	Set screw	3/8"x3/4"L	4				
A49	Hex. soc. cap screw	1/2"x1-1/4"L	4				
A50	Spring washer	1/4"	3				
A51	Hex. soc. cap screw	1/4"x1/2"L	3				
A52	Set screw	3/8"x3/4"L	4				
A53	Hex. soc. cap screw	1/2"x1-1/4"L	4				
A54	Thumb screw	1/4"x1/2"L	2				
A55	Set screw	1/4"x1/4"L	1				

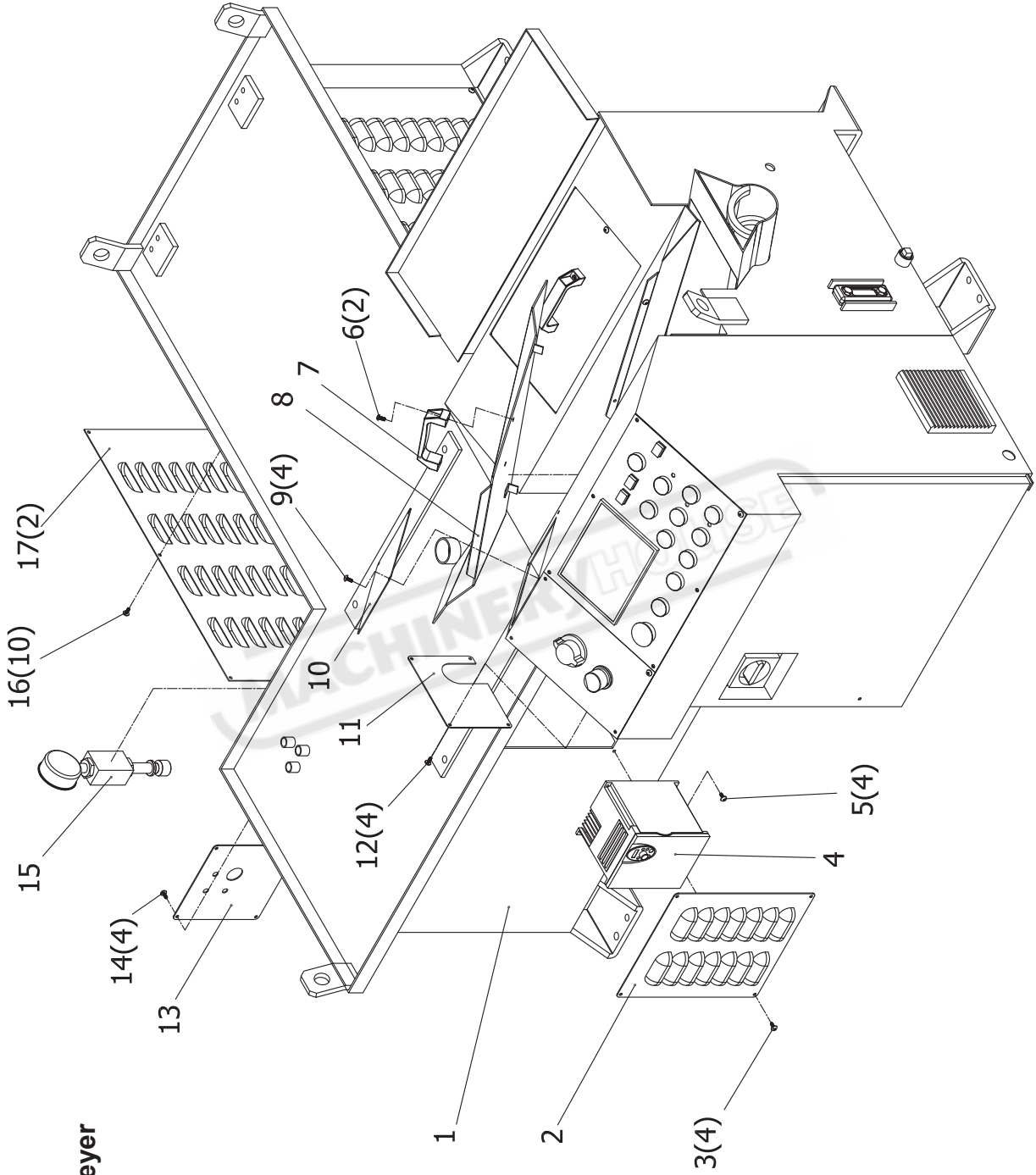
1000811-V2

**WS-1318FA
SECTION A
Auto chip conveyor**



1000811-V2

**WS-1318FA
SECTION B
Auto chip conveyer**

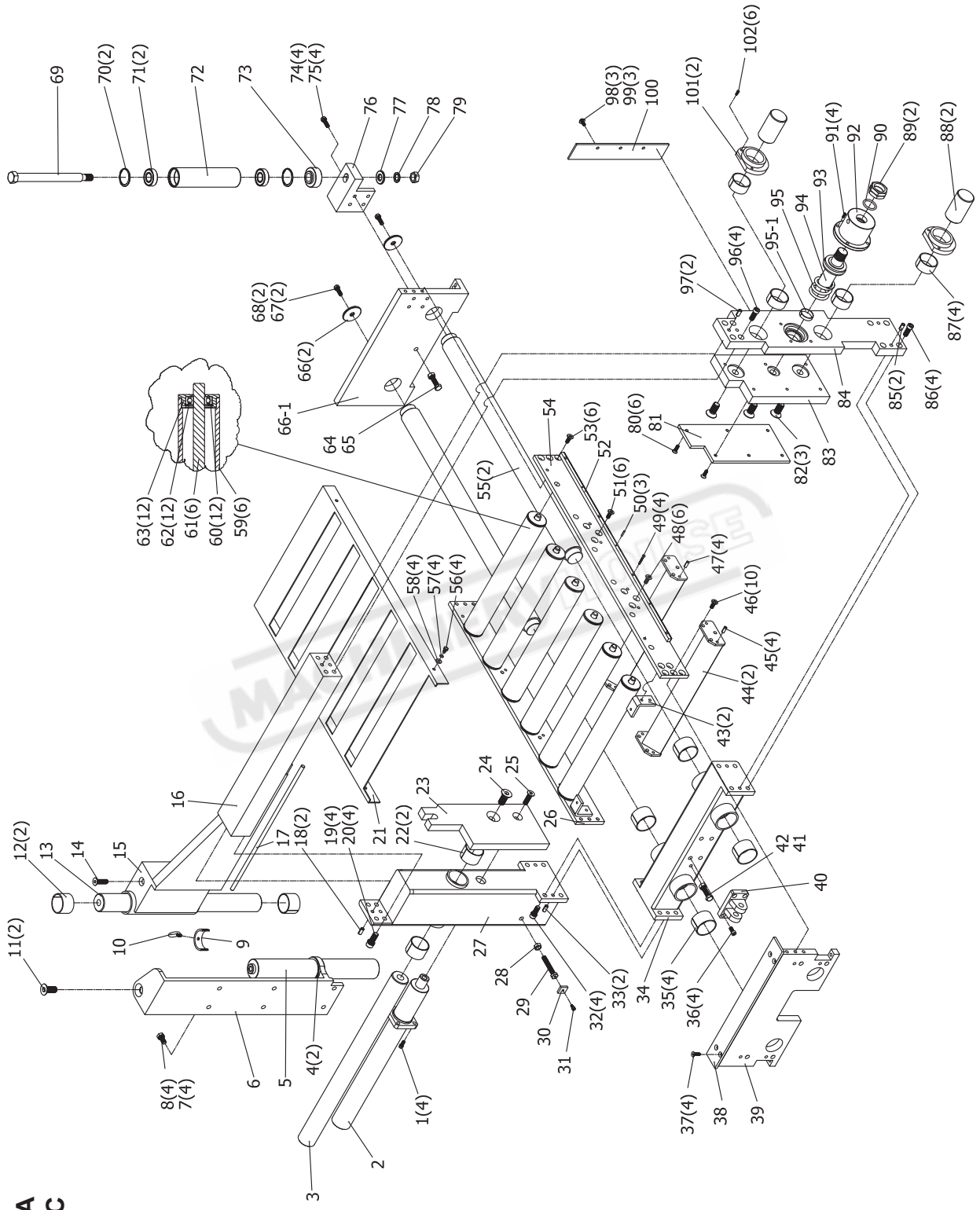


SECTION C - PARTS LIST

Part No.	Description	Size No.	Q'ty	Part No.	Description	Size No.	Q'ty
C1	Hex. soc. cap screw	3/8"x1-1/4"L	4	C53	Flat head screw	3/8"x1"L	6
C2	Front cylinder		1	C54	Roller holder (R)	S138F2-04-B	1
C3	Upper shaft	S138F2-03	1	C55	Feeding rod	S138F2-01	2
C4	C Ring	S60	2	C56	Hex. cap bolt	5/16"x1/2"	4
C5	Vertical cylinder		1	C57	Spring washer	5/16"	4
C6	Fixed bracket	S138F3-08	1	C58	Flat washer	5/16"	4
C7	Spring washer	1/2"	4	C59	Roller	S138 02-07-A	6
C8	Hex. cap bolt	1/2"x1"L	4	C60	C Ring	R40	12
C9	Safety collar	S1318F2-16	1	C61	Roller shaft	S138F2-14	6
C10	Ring screw	M8	1	C62	Bearing	6203	12
C11	Flat head screw	3/4"x1-1/4"L	2	C63	Roller sleeve	S138 02-07-C	12
C12	Oilless bush 5540	461D5-10	2	C64	Steel hex. cap bolt	1/2"x1-3/4"L	1
C13	Guide shaft	S138F2-02	1	C65	Nut	1/2"	1
C14	Flat head screw	1/2"x3/4"L	1	C66	Washer	S138F2-01-A	2
C15	Down bracket	S138F3-09	1	C66-1	Roller bracket (Rear)	S138F2-04-A	1
C16	Upper bracket	S138F3-11	1	C67	Steel hex. cap bolt	1/2"x1-1/4"L	2
C17	Plastic wire	D10	1	C68	Spring washer	1/2"	2
C18	Spring pin	10x30L	2	C69	Roller shaft	S138 02-18-A	1
C19	Hex. soc. cap screw	1/2"x1-1/4"L	4	C70	C Ring	R52	2
C20	Spring washer	1/2"	4	C71	Bearing	6205	2
C21	Roller cover	S138F3-04	1	C72	Vertical roller	S138 02-18	1
C22	Oilless bush 5540	461D5-10	2	C73	Roller sleeve	S138 02-18-B	1
C23	Front vice	S138F2-07	1	C74	Steel hex. cap bolt	3/8"x1"L	4
C24	Flat head screw	3/4"x1"L	1	C75	Spring washer	3/8"	4
C25	Flat head screw	1/2"x1-1/4"L	1	C76	Vertical roller	S138F3-23	1
C26	Roller holder (L)	S138F2-04-C	1	C77	Flat washer	3/4"	1
C27	Cylinder bracket	S138F3-10	1	C78	Spring washer	3/4"	1
C28	Nut	1/2"	1	C79	Nut	3/4"	1
C29	Sensor setting screw	S138F2-17	1	C80	Flat head screw	5/16"x3/4"	6
C30	Sensor plate	S138F3-21-A	1	C81	Vise steel plate	S138F2-08-A	1
C31	Hex. soc. cap screw	1/4"x1/2"L	1	C82	Flat head screw	3/4"x1-1/4"L	3
C32	Hex. soc. cap screw	1/2"x1-1/4"L	4	C83	Feeding fixed vise	S138F2-08	1
C33	Spring pin	10x30L	2	C84	Vise locking bracket	S138F2-09	1
C34	Rod supporter	S138F3-12	1	C85	Spring pin	10x30L	2
C35	Oilless bush 6040	S138F5-11	4	C86	Hex. soc. cap screw	1/2"x1-1/4"L	4
C36	Hex. soc. cap screw	3/8"x5/8"L	4	C87	Oilless bush 5530	S138F5-10	4
C37	Flat head screw	5/16"x3/4"L	4	C88	Upper shaft	S138F2-15-B	2
C38	Upper bracket	S138F2-04-D	1	C89	Nut	S138F2-20	2
C39	Front bracket	S138F2-04	1	C90	O Ring P35	S1380510	1
C40	Cylinder connecting	S138F1-03	1	C91	Hex. soc. cap screw	5/16"x1"L	4
C41	Hex. cap bolt	1/2"x2-1/2"L	1	C92	Cylinder sleeve	S138F2-15-A	1
C42	Nut	1/2"	1	C93	O Ring P60	L25A5-47	1
C43	Angle plate	S138F3-04-B	2	C94	Short cylinder piston	S138F2-15	1
C44	Enhance plate	S138F3-04-A	2	C95	Spring	S138F4-05	1
C45	Spring pin	8x20L	4	C95-1	Oilless bushing 4015	S138F5-14	1
C46	Flat head screw	3/8"x1"L	10	C96	Hex. soc. cap screw	1/2"x1-1/4"	4
C47	Spring pin	8x20L	4	C97	Spring pin	10x30L	2
C48	Flat head screw	3/8"x1"L	6	C98	Spring washer	5/16"	3
C49	Hex. soc. cap screw	5/32"x3/4"L	4	C99	Round head soc. screw	5/16"x1"L	3
C50	Spring pin	4x25L	3	C100	Guide plate	S138F3-19	1
C51	Flat head screw	3/8"x1"L	6	C101	Shaft collar	S138F2-15-C	2
C52	Rack	S138F2-12	1	C102	Hex. soc. cap screw	1/4"x1"L	6

1000811-V2

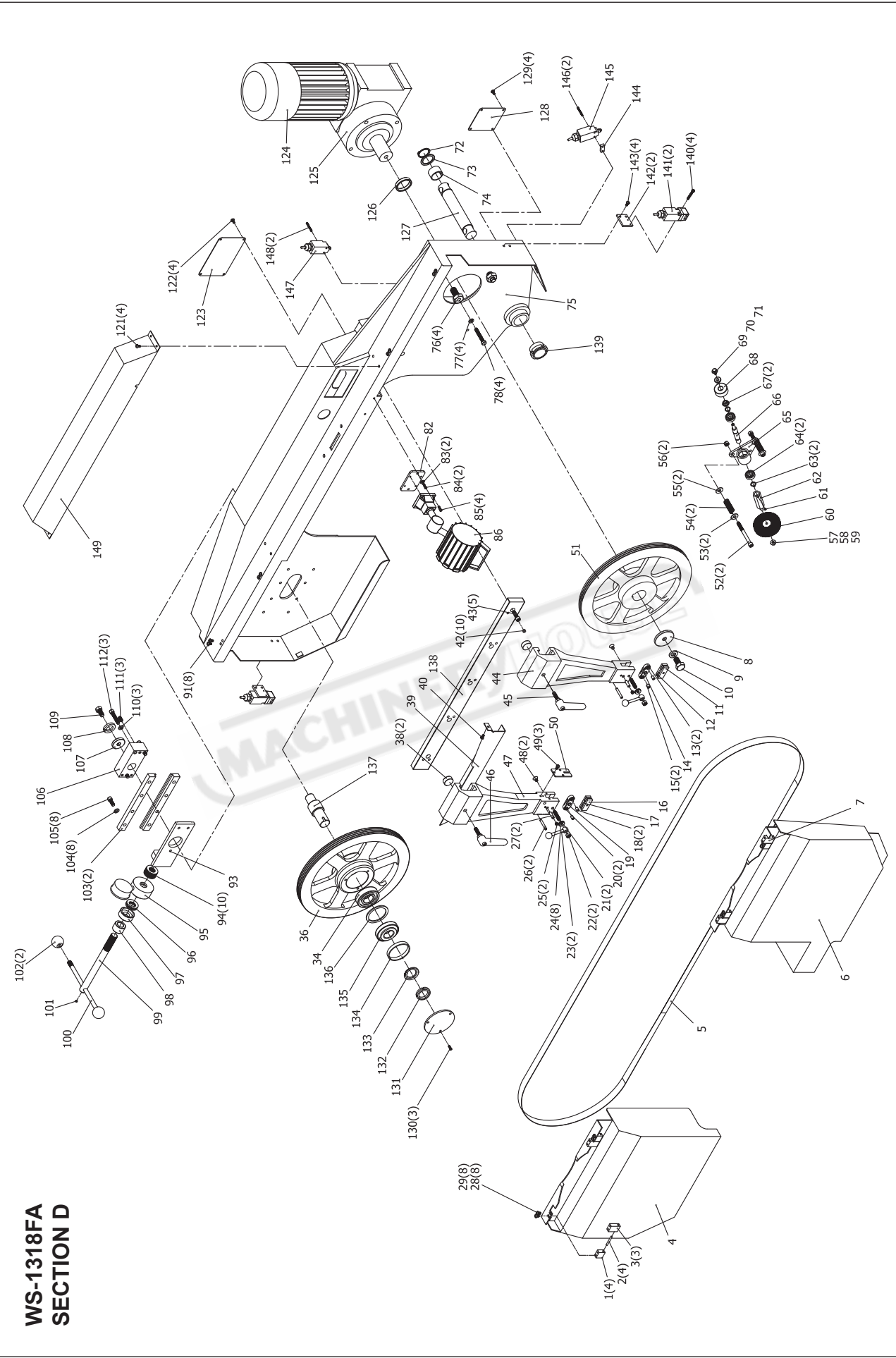
**WS-1318FA
SECTION C**



SECTION D - PARTS LIST

Part No.	Description	Size No.	Q'ty	Part No.	Description	Size No.	Q'ty
D1	Cover latch (F)	S138 02-19-1	4	D71	Hex. cap bolt	1/4"x1/2"L	1
D2	Pin	5x50L	4	D72	C Ring	S38	1
D3	Cover latch (R)	S138 02-19	3	D73	Washer	S138 02-01-1	1
D4	Front wheel cover	S138 03-04-1	1	D74	Oilless bush 3830	S1380504	1
D5	Blade	27x4130x0.9	1	D75	Saw head	S138F3-02	1
D6	Rear wheel cover	S138 03-04-2	1	D76	Adjusting screw	S138F2-13	4
D7	Rear latch	S138 02-19-2	1	D77	Spring washer	1/2"	4
D8	Wheel washer	S138 02-14-2	1	D78	Steel hex. cap bolt	1/2"x2-1/2"L	4
D9	Spring washer	3/4"	1	D82	Light plate	S138F3-16	1
D10	Hex. cap bolt	5/8"x1-1/4"L	1	D83	Spring washer	3/16"	2
D11	Adjustable guide	S138 02-12-3	1	D84	Big round head screw	3/16"x1/2"L	2
D12	Fixed guide	S138 02-12-2	1	D85	Hex. soc. cap screw	3/16"x5/8"L	4
D13	Bearing 608	331D5-17	2	D86	Work light	L25A5-32	1
D14	Bearing bracket	S138 03-14	1	D91	Round head soc. screw	1/4"x1/2"L	8
D15	Pin	8x12L	2	D93	Tension slide	S138 02-24	1
D16	Adjustable guide	S138 02-12-3	1	D94	Disc washer 502225	460D4-09	10
D17	Fixed guide	S138 02-12-2	1	D95	Tension gauge	S1380410	1
D18	Pin	8x12L	2	D96	Thrust bearing 51105	460D2-22	1
D19	Bearing bracket	S138 03-14	1	D97	Thrust bearing sleeve	S138 02-05-9	1
D20	Bearing 608	331D5-17	2	D98	Front sleeve	S138 02-05-7	1
D21	Adjusting screw	S138 02-12-1	2	D99	Tension bolt	S138 02-05-6	1
D22	Nut	3/8"	2	D100	Tension handle	S138 02-05-10	1
D23	Locking handle	S138 02-12	2	D101	Set screw	1/4"x1/4"	1
D24	Disc washer 201010	S1380414	8	D102	Bakelite ball 1-1/2"x1/2"	S1380404	2
D25	Set screw	3/8"x3/8"L	2	D103	Fixed plate	S138 02-05-5	2
D26	Spring pin	6x45L	2	D104	Spring washer	3/8"	8
D27	Pin	8x25L	2	D105	Hex. soc. cap screw	3/8"x1"L	8
D28	Round head soc. screw	1/4"x1/2"L	8	D106	Wheel fixed block	S138 02-05-3	1
D29	Spring washer	1/4"	8	D107	Fixed washer	S138 02-05-2	1
D34	Bearing 6307	S1380502	1	D108	Spring washer	1/2"	1
D36	Front wheel	S138 01-04	1	D109	Hex. cap bolt	1/2"x1"L	1
D38	Lock brass	S138 02-16	2	D110	Spring washer	3/8"	3
D39	Blade guard	S138 03-17	1	D111	Set screw	3/8"x3/4"L	3
D40	Round head soc. screw	1/4"x1/2"L	1	D112	Hex. soc. cap screw	3/8"x2"L	3
D42	Set screw	3/8"x3/4"L	10	D121	Round head soc. screw	3/16"x1/2"L	4
D43	Hex. soc. cap screw	3/8"x1"L	5	D122	Round head soc. screw	3/16"x1/2"L	4
D44	Blade guide arm (R)	S138 01-07	1	D123	Cover	S138F3-02-B	1
D45	Locking handle 1/2"x40L	350S0420	1	D124	Motor	3HP	1
D46	Locking handle 1/2"x40L	350S0420	1	D125	Worm Reducer	S1380412	1
D47	Blade guide arm (F)	S138 01-06	1	D126	Shaft collar	S138 02-14	1
D48	Flat head screw	5/16"x3/4"L	2	D127	Saw head shaft	S138 02-01	1
D49	Round head soc. screw	1/4"x1/2"L	3	D128	Lower cover	S138F3-02-A	1
D50	Coolant cover	S138 03-13	1	D129	Round head soc. screw	3/16"x1/2"L	4
D51	Rear wheel	S138 01-05	1	D130	Hex. soc. sap screw	1/4"x1/2"L	3
D52	Hex. soc. cap screw	3/8"x4"	2	D131	Bearing cover	S138F2-23	1
D53	Flat washer	3/8"	2	D132	Bearing nut	AN07	1
D54	Compress spring	S138 04-09	2	D133	Tooth washer	AW07	1
D55	Flat washer	3/8"	2	D134	Big spacer	S138F2-22-B	1
D56	Nut	3/8"	2	D135	Bearing 30307	S138F5-15	1
D57	Nut	1/4"	1	D136	Front wheel spacer	S138F2-22-A	1
D58	Flat washer	1/4"	1	D137	Front wheel shaft	S138F2-22	1
D59	Spring washer	1/4"	1	D138	Steel plate	S138 02-06	1
D60	Chip brush	331D4-08	1	D139	Adjusting collar	S138F2-25-A	1
D61	Set screw	1/4"x1/4"L	1	D140	Hex. soc. cap screw	5/32"x1-1/4"L	4
D62	Brush shaft	S138 02-15-1	1	D141	Limit switch EK-1-15R	S138F4-10	2
D63	C Ring	S15	2	D142	Position plate	S138A 03-14	2
D64	Bearing 6002	S1380505	2	D143	Round head soc. screw	1/4"x1/2"L	4
D65	Brush bracket	S138 03-16	1	D144	Switch plate	S138F3-29-A	1
D66	Shaft	S138 02-15	1	D145	Limit switch ED1-3-32	H33D4-11	1
D67	Rubber cover	331D2-42-1	2	D146	Hex. soc. cap screw	5/32"x1-1/4"L	2
D68	Brush wheel	S138 02-15-2	1	D147	Limit switch ED-31	331D5-06-C	1
D69	Flat washer	1/4"	1	D148	Hex. soc. cap screw	5/32"x1-1/4"L	2
D70	Spring washer	1/4"	1	D149	Upper device	S138F3-02-C	1

1000811-V2

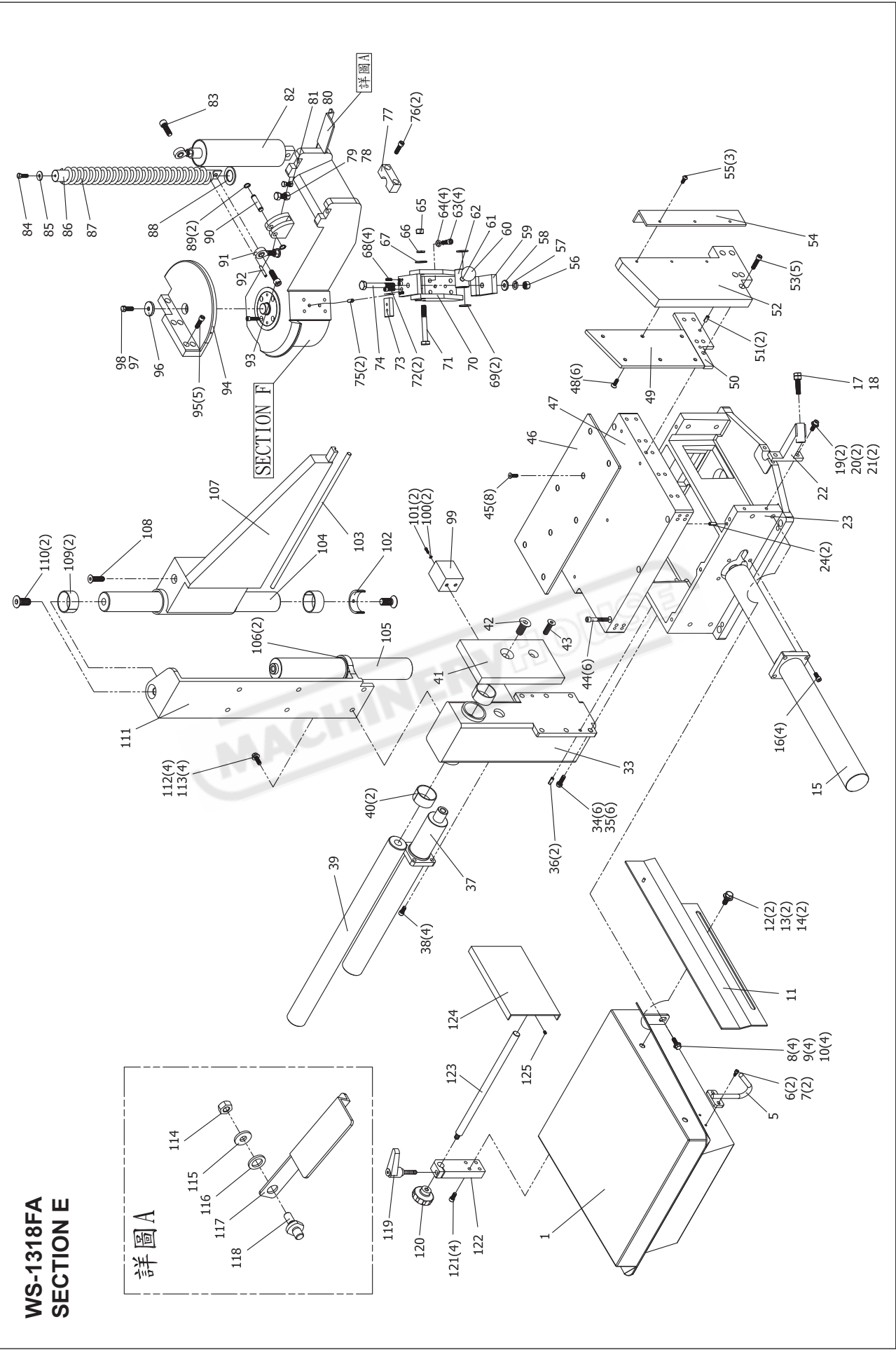


**WS-1318FA
SECTION D**

SECTION E - PARTS LIST

Part No.	Description	Size No.	Q'ty	Part No.	Description	Size No.	Q'ty
E1	Retrieval table	S138F3-06	1	E69	Flat washer	1/2"	2
E5	Coolant gun holder	S138F3-20	1	E70	Fixed block	S13803-11	1
E6	Hex. soc. cap screw	1/4"x1"L	2	E71	Steel hex cap bolt	1/2"x4"L	1
E7	Spring washer	1/4"	2	E72	Hex. soc. cap screw	5/16"x1"L	2
E8	Hex. cap bolt	1/2"x5/8"L	4	E73	Upper clamp block	S13802-11	1
E9	Spring washer	1/2"	4	E74	Steel hex. cap bolt	1/2"x4"L	1
E10	Flat washer	1/2"	4	E75	Spring pin	8x20L	2
E11	Side plate	S138F3-06-A	1	E76	Hex. soc. cap screw	3/8"x1-1/2"L	2
E12	Hex. cap bolt	1/2"x5/8"L	2	E77	Locking block	S13802-02-2	1
E13	Spring washer	1/2"	2	E78	Nut	1/2"	1
E14	Flat washer	1/2"	2	E79	Hex. cap bolt	1/2"x1-1/2"L	1
E15	Feeding cylinder		1	E80	Nut	3/8"	1
E16	Hex. soc. cap screw	3/8"x1-1/4"L	4	E81	Hex. cap bolt	3/8"x1"L	1
E17	Hex. cap bolt	1/2"x1-1/4"L	1	E82	Lift cylinder		1
E18	Nut	1/2"	1	E83	Hex. soc. cap screw	1/2"x2-1/2"L	1
E19	Hex. soc. cap screw	3/8"x1-1/4"L	2	E84	Hex. cap bolt	5/16"x1"L	1
E20	Spring washer	3/8"	2	E85	Washer	S13802-22	1
E21	Flat washer	3/8"	2	E86	Spring shaft	S13802-08	1
E22	0° Position device	S138F3-14	1	E87	Compress spring	S13804-07	1
E23	Cutting table	S138F1-01	1	E88	Position washer	S13802-08-1	1
E24	Spring pin	8x20L	2	E89	C Ring	S14	2
E33	Front cylinder supporter	S138F3-09	1	E90	Lower shaft	S13802-17	1
E34	Steel hex. cap bolt	1/2"x1-1/2"L	6	E91	Fish eye bearing 1/2"x20UNF	S1380520	1
E35	Spring washer	1/2"	6	E92	Spring Pin	6x30L	1
E36	Spring pin	8x20L	2	E93	Hex. soc. cap screw	1/2"x1-1/4"L	1
E37	Vice cylinder		1	E94	Upper cover	S138F1-02	1
E38	Hex. soc. cap screw	3/8"x1-1/4"L	4	E95	Hex. soc. cap screw	3/8"x1-1/4"L	5
E39	Upper shaft	S138F2-03	1	E96	Locking washer	S13802-28	1
E40	Oilless bush 5540	461D5-10	2	E97	Spring washer	3/8"	1
E41	Front vice	S138F2-05	1	E98	Steel hex. cap bolt	3/8"x1"L	1
E42	Flat head screw	3/4"x1-1/4"L	1	E99	Sensor bracket	S138F3-21	1
E43	Flat head screw	1/2"x1-1/4"L	1	E100	Spring washer	5/16"	2
E44	Hex. soc. cap screw	3/8"x2-1/2"L	6	E101	Hex. soc. cap screw	5/16"x1/2"L	2
E45	Flat head screw	5/16"x3/4"L	8	E102	Safety collar	S138F2-16	1
E46	Cutting plate	S13802-09	1	E103	Plastic wire	Ø10	1
E47	Cutting table	S13801-02	1	E104	Guide shaft	S138F2-02	1
E48	Flat head screw	5/16"x3/4"L	6	E105	Press cylinder		1
E49	Vice steel plate	S138F2-06-A	1	E106	C Ring	S60	2
E50	Attached plate	S138F2-06-B	1	E107	Press bracket	S138F3-07	1
E51	Spring pin	8x20L	2	E108	Flat head screw	1/2"x3/4"L	1
E52	Rear vice	S138F2-06	1	E109	Oilless bush 5540	461D5-10	2
E53	Hex. soc. cap screw	3/8"x2"L	5	E110	Flat head screw	3/4"x1-1/4"L	2
E54	Guide plate	S138F3-18	1	E111	Press fixed bracket	S138F3-08	1
E55	Hex. soc. cap screw	5/16"x3/4"L	3	E112	Spring washer	1/2"	4
E56	Nylon nut	1/2"	1	E113	Hex. cap bolt	1/2"x1"L	4
E57	Spring washer	1/2"	1	E114	Nylon nut	3/8"	1
E58	Flat washer	1/2"	1	E115	Position washer	S138F2-26-A	1
E59	Clamping block	S13802-11-1	1	E116	Position plastic washer	S138F2-26-B	1
E60	Bakelite ball 1-1/2"x1/2"	S1380404	1	E117	Adjusting plate	S138F3-29	1
E61	Cam handle	S13802-11-3	1	E118	Adjusting screw	S138F2-26	1
E62	Locking cam	S13802-11-2	1	E119	Locking handle 3/8"x30L	9160504-1	1
E63	Hex. soc. cap screw	3/8"x1-1/4"L	4	E120	Bakelite ball 2"x1/2"	S1380403	1
E64	Spring washer	3/8"	4	E121	Hex. soc. cap screw	5/16"x1"L	4
E65	Nylon nut	1/2"	1	E122	Fixed bracket	S138F3-27-A	1
E66	Spring washer	1/2"	1	E123	Rod	S138F2-24	1
E67	Flat washer	1/2"	1	E124	Collecting plate	S138F3-27	1
E68	Set screw	1/4"x3/4"L	4	E125	Set screw	5/16"x3/8"L	1

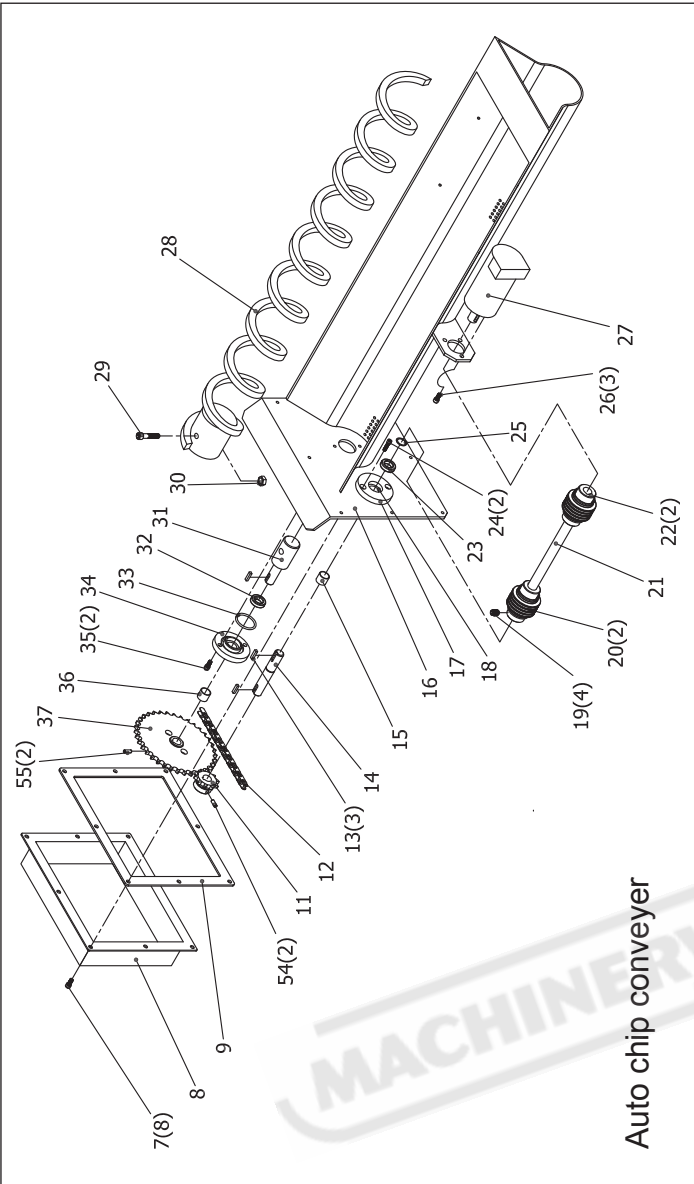
1000811-V2



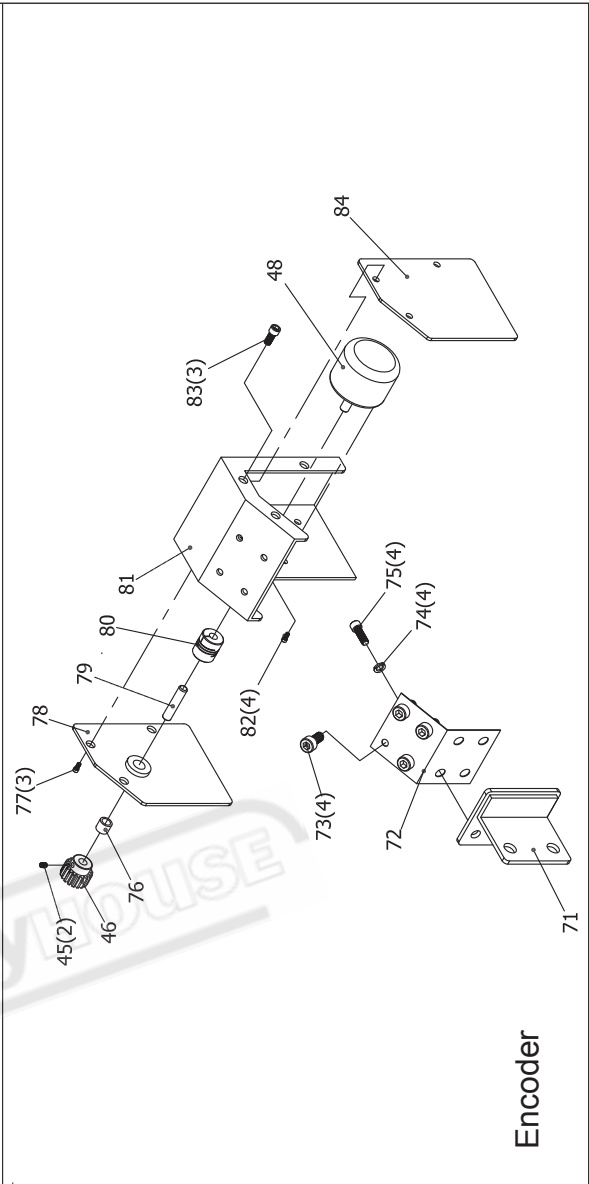
SECTION F - PARTS LIST

Part No.	Description	Size No.	Q'ty	Part No.	Description	Size No.	Q'ty
F1	Hex. soc. cap screw	5/16"x1-1/2"L	8	F72	Encoder plate	S138F3-34-E	1
F2	Swing cover	S13802-02-1	2	F73	Hex. soc. cap screw	3/16"x3/8"L	4
F3	O Ring P35	S1380510	2	F74	Spring washer	1/4"	4
F4	Bearing 32007	331D5-13-A	2	F75	Round head screw	1/4"x1/2"L	4
F5	Swing base	S13801-03	1	F76	Oilless bushing	608	1
F6	Swing shaft	S13802-02	1	F77	Round head screw	3/16"x1/4"L	3
F7	Hex. soc. cap screw	1/4"x1/2"L	8	F78	Fixed plate	S138F3-34-B	1
F8	Chain wheel cover	L25A3-09-A	1	F79	Steel pin	6x30L	1
F9	Rubber seal	L25A5-38	1	F80	Shaft coupling	SWS-16C	1
F11	Small chain wheel	L46N2-63-A	1	F81	Encoder bracket	S138F3-34	1
F12	Chain L25A5-30+	L25A5-30A	1	F82	Round head screw	3/16"x1/4"L	4
F13	Key	5x20L	3	F83	Round head screw	3/16"x1/4"L	3
F14	Small shaft	L25A2-63	1	F84	Encoder cover	S138F3-34-A	1
F15	Oilless bush 1625	L40N5-08-1	1				
F16	Conveyer base	S138F3-03	1				
F17	Small shaft bush	L25A2-63A	1				
F18	O Ring P-32	S138F5-02	1				
F19	Set screw	M6x6L	4				
F20	Rubber cover SJD16	L46N5-31	2				
F21	Drive shaft	L25A2-64	1				
F22	Universal Joint SJD16	L46N5-30	2				
F23	Oil seal TC16.7.26	L46N4-11	1				
F24	Hex. soc. cap screw	1/4"x3/8"L	2				
F25	C Ring	S-16	1				
F26	Hex. soc. cap screw	M6x16	3				
F27	Hydraulic motor		1				
F28	Conveyer screw	L25A2-53-A	1				
F29	Hex. soc. cap screw	M8x60L	1				
F30	Nut	M8	1				
F31	Large chain wheel shaft	L25A2-63B	1				
F32	Oil seal TC16.7.26	L46N4-11	1				
F33	O Ring P-32	S138F5-02	1				
F34	Shaft bush	L25A2-63-C	1				
F35	Hex. soc. cap screw	1/4"x3/8"L	2				
F36	Oilless bush 1625	L40N5-08-1	1				
F37	Big chain wheel	L46N2-63	1				
F45	Set screw	M4x4L	2				
F46	Length gear	S138F2-11	1				
F47	Round head screw	M3x6L	4				
F48	Encoder		1				
F50	Limited set	S138F2-27	1				
F51	Hex. soc. cap screw	1/2"x1-1/4"L	2				
F52	Nut	1/2"	1				
F53	Steel hex. cap bolt	1/2"x1-3/4"L	1				
F54	Set screw	M5x5L	2				
F55	Set screw	M5x5L	2				
F71	Adjusting bracket	S138F3-34-F	1				

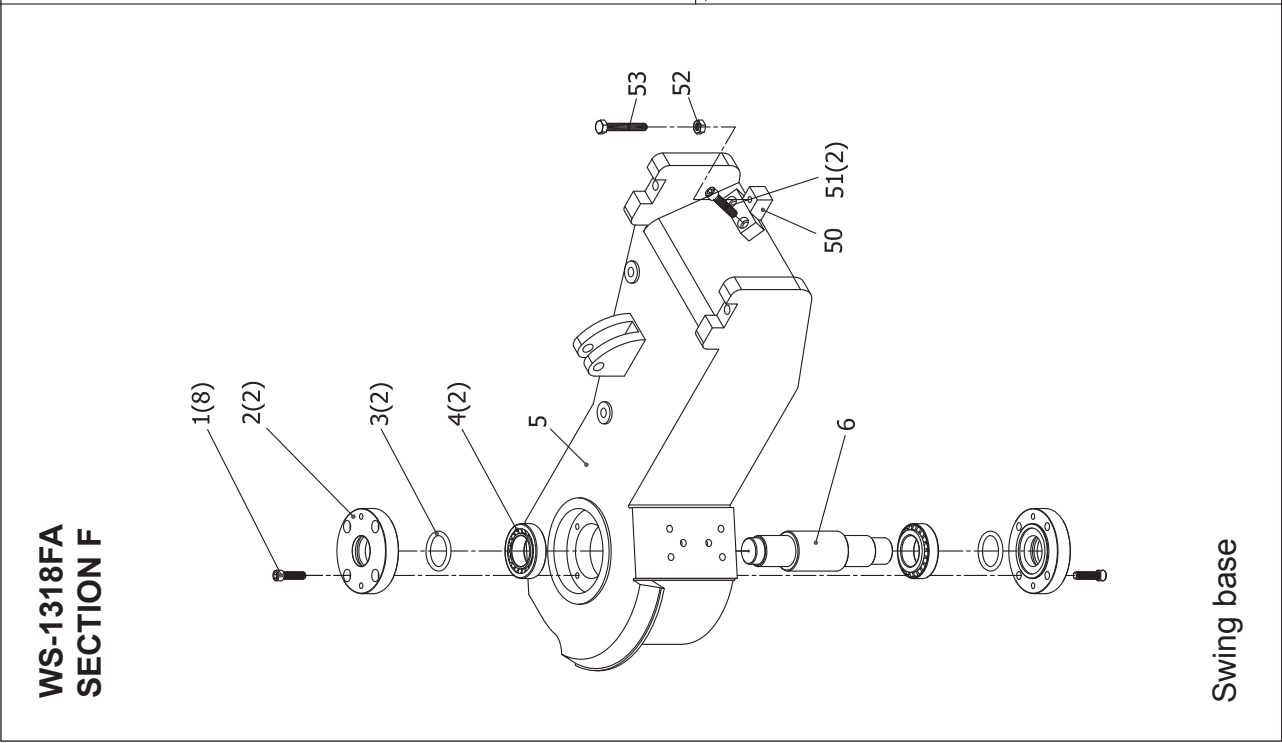
1010207-V3



Auto chip conveyor



Encoder



WS-1318FA
SECTION F

Swing base

SECTION G - PARTS LIST

Part No.	Description	Code No.	Q'ty	Part No.	Description	Code No.	Q'ty
G1	Emergency stop button	SB1	1				
G2	Power indicator light	HL1	1				
G3	Hydraulic start button	SB2/HL3	1				
G4	Operation start button	SB3/HL2	1				
G5	Bow up button	SB5	1				
G6	Bow down button	SB6	1				
G7	LED Light	HL7	1				
G8	LED Light	HL8	1				
G9	Bench vice open button	SB8	1				
G10	Shuttle vice open button	SB10	1				
G11	LED Light	HL10	1				
G12	LED Light	HL11	1				
G13	Bench vice close button	SB7	1				
G14	Shuttle vice close button	SB9	1				
G15	Select switch	SA2	1				
G16	Shuttle vice forward button	SB11	1				
G17	LED Light	HL12	1				
G18	Cover		1				
G19	Shuttle vice backward button	SB12	1				
G20	Coolant pump button	SB4/HL4	1				
G21	Light button	SB14/HL14	1				
G22	Touch screen (5.7")	HMI	1				
G23	Transformer	T1	1				
G24	Power in connecting board	X9	1				
G25	Inverter connecting board	X10	1				
G26	Terminal board	X3	1				
G27	Coolant motor overload relay	FS3	1				
G28	Hydraulic motor overload relay	FS2	1				
G29	Motor circular protector	QM2	1				
G30	Power in fuse	FU4	1				
G31	Power in fuse	FU5	1				
G32	Power in fuse	FU6	1				
G33	Transformer power in fuse	FU7	1				
G34	Transformer power in fuse	FU8	1				
G35	Inverter fan output fuse	FU9	1				
G36	Transformer output fuse (AC100V)	FU10	1				
G37	Transformer output fuse (AC100V)	FU11	1				
G38	Transformer output fuse (AC24V)	FU12	1				
G39	Blade motor contactor	KM1	1				
G40	Hydraulic motor contactor	KM2	1				
G41	Coolant motor contactor	KM3	1				
G42	Relay	K1	1				
G43	Relay	K7	1				
G44	Relay	K17	1				
G45	Power supply fuse (DC24V)	FU13	1				
G46	PLC	U1	1				
G47	Terminal board	X5	1				

WS-1318FA SECTION G

